

What is the top speed of the Honda CB 1000cc?

# HONDA CB1000 SERVICE GMAUND



Download PDF file : [honda+cb1000+service++gmaund.pdf](#)

## FAQs about HONDA CB1000 SERVICE GMAUND

**Is Honda cb1000 a good bike?** Fast and fun but not overwhelming, light and accurate without sacrificing rideability, the Honda CB1000R might not be as rowdy or as focused as some of its sportier opposition but it delivers a polished and inspiring road ride.

**How much is a Honda cb1000?**

**What is the top speed of the Honda CB 1000cc?**

**How much horsepower does a CB1000 have?** You get a reported 121.8 hp and 68.8 lb. -ft. of torque at 8,200 rpm from a DOHC 998cc liquid-cooled four-cylinder motor. You'll ride 32.7 inches off the ground, suspended by a Showa fork in front (4.7 inches of travel) and a Showa monoshock (5.2 inches of travel) in back.

**Does the CB1000R have a quickshifter?** It features a six-speed manual gearbox with a quick shifter, which means you can upshift without the clutch under full power. Plus, it aids in downshifting and is adjustable for three levels: soft, medium, and hard.

**What is the tank range of the Honda CB1000R?**

**What is the BHP of CB 1000?**

**What does CB stand for in Honda motorcycles?** —often stand for something in particular, often a phrase that denotes the bike's purpose or inspiration. Suzuki's GSX-R supposedly stands for “Grand Sport eXperimental- Racing”, Honda's CB stands for “City Bike”, and CBR is short for “City Bike Racer” (or “racing”) not for “cross beam racer”.

**Is 1000cc bike fast?** A 1000cc sport bike can typically reach speeds of 180-190 mph (290-305 km/h).

**What is the fastest under 1000cc motorbike?** Indian Scout Special 1920 (Engine) New Zealander Burt Munro rode this highly modified motorcycle on his final speed run at Bonneville Salt Flats, Utah, United States. On this run, Munro set the land speed record of 296 km/h for a motorcycle under 1000 cc, a record that remains unbroken.

**What engine is in the Honda CB1000 Hornet?** On the mechanical front, the CB1000 Hornet will use a 999cc, inline-four-cylinder engine from the 2017 Honda CBR 1000 RR Fireblade. But, it will be tuned differently to produce around 150bhp and over 110Nm of peak torque.

**Is the Honda CB1000R comfortable to ride?** As such, it's a little harder to move around on the chassis compared to something like a Yamaha MT-10, but the seat itself is well padded and comfortable for at least an hour's ride before you'll need a break.

**Did Honda discontinue the CB1000R?** In addition to carrying over street bike models like the CBR1000RR and CBR600RR, Honda will also leave its CB1000R unchanged for 2024, available in Black Edition trim and starting at \$12,999. The newest edition is now available at your local Honda dealership.

**What is the disadvantage of quickshifter?** It's very unlikely but not unheard of. A factory-fitted quick shifter has a very low chance of causing any damage to your gearbox or engine. However, there are stories of aftermarket quickshifters causing damage to bikes and some even claiming their gearbox was destroyed because of one.

**Does using a quickshifter damage gearbox?** If correctly programmed, the quick shifter doesn't cause any damage to the transmission components.

**Does quickshifter increase speed?** Having a quick shifter also increases the speed of your motorcycle. It increases safety and enhances the overall performance of your motorcycle.

**Can CB1000R be lowered?** Honda CB1000R lowering kit The lowering is achieved by replacing the coil spring retainer in the rear shock absorber with a new lowering one made by Lust Racing. This is a very good modification for shorter riders who have difficulties to reach to the ground with both feet.

**Is Honda CB1000R a cafe racer?** Take a closer look at the impressive details of the new CB1000R. A unique blend of Sport Naked and minimalist Café Racer styling that's hard to ignore.

**How heavy is a Honda CB1000R?**

**What is the fuel consumption of Honda CB 1000?** The ARAI claimed mileage of Honda CB1000R is 17.1 kmpl. This is the claimed mileage for all variants.

**What is the torque of Honda CB 1000?**

**What is the top speed of Honda CB 1000 km h?** It weighs 222 kg and claims 0-100 kmph in just 4 seconds. Honda even claims a top speed of 225 kmph for the motorcycle.

**Is the Honda CB1000R comfortable to ride?** As such, it's a little harder to move around on the chassis compared to something like a Yamaha MT-10, but the seat itself is well padded and comfortable for at least an hour's ride before you'll need a break.

**How fast is a Honda CBF 1000?**

**Is Honda a good brand of bike?** Honda Bike User Reviews Honda shine good performance mileage and pickup driving and good engine performance, Service cost low. Maintenance cost. Really is very good mileage and stylish bike and price also very reasonable. Really very happy and proud because i have sp125.

**Are Honda motorcycles good bikes?** Over the past two decades, Honda's precision-engineered marvel has consistently dominated or held a prominent position in most liter bike group evaluations, maintaining a steady track record of sales success.

**Does CB1000R have quick shifter?** The CB1000R Black Edition has a three-level, adjustable quick shifter, for fast, smooth up-and-down gear changes during spirited riding.

**Does the CB1000R have a slipper clutch?** This innovative design hooks up tight to get all the CB1000R Black Edition's power to the ground, yet still offers a light pull at the clutch lever. Plus, the slipper design helps mitigate rear wheel hop during aggressive downshifts and deceleration.

**What is the rain mode on the CB1000R?** RAIN mode employs the lowest Power setting for the least-aggressive power delivery, medium Engine Braking and high HSTC. The lower levels of power and torque delivery are focused on the first three gears.

**What is the fuel economy of a CBF1000?** Honda CBF1000 (2006-2009) Economy Owners argue the toss but anything from 45-70mpg seems achievable with most reckoning on getting mid-50s for their mpg.

**When did Honda stop making the CBF1000?** The Honda CBF1000 is a sport touring motorcycle, part of the CBF series produced by Honda from 2006 to 2018. It is powered by a 998 cc inline-four engine, which is based on the CBR1000RR Fireblade engine.

**What is the top speed of a Honda 1000cc?** The top speed of the Honda CBR 1000RR is approximately 186 mph (299 km/h), depending on various factors such as wind resistance and road conditions.

**Is Honda better than Yamaha?** While Yamaha still provides a digital instrument cluster, it is less advanced and customizable than Honda's. If you're looking for more advanced features, Honda offers more technology options, but at a greater price. Another disparity between Honda and Yamaha is availability in terms of dealership locations.

**Do Honda motorcycles last long?** How Many Miles Can a Honda Motorcycle Last? A well-maintained Honda bike can last for well over 100,000 miles, the average being 150,000 miles. Touring models like the Gold Wing can last even longer — 300,000 miles in some cases.

**Are Honda bikes made in China?** Sundry Honda has its headquarters in Shanghai, and its production facilities are located in Taicang (Jiangsu) and Tianjin. Situated approximately 50km northwest of Shanghai, the Taicang factory has around 2,000 employees and an annual production capacity of approximately 500,000 units (as of 2018).

**Why are Honda bike engines the best?** Honda motorcycles are known for their reliability but still require regular maintenance and repairs. Choosing a model with low maintenance and repair costs can help keep your family's motorcycle running smoothly and help save money in the long run.

**What motorcycle requires the least maintenance?**

**Which is the most popular Honda bike?** Honda Shine and Honda Unicorn are one of the most popular motorcycles available in India. They are known for being liked by daily commuters. Honda has a strong presence in the Indian market, and it has a network of over 6,000 dealerships across the

country.

## **Table of Contents Honda cb1000 service gmaund**

Welcoming eBook Trends:

1. Incorporation of Media-rich Elements
2. Immersive and Gamified Electronic Books

Understanding Honda cb1000 service gmaund Formats

1. ePub, Portable Document Format, MOBI, and Additional Formats
2. Honda cb1000 service gmaund Adaptability with Readers
3. Honda cb1000 service gmaund Enhanced Electronic Book Features

Finding Honda cb1000 service gmaund

1. Complimentary and Purchased Digital Books
2. Honda cb1000 service gmaund Public Domain eBooks
3. Honda cb1000 service gmaund Membership Services
4. Cost-effective Options

Finding Reliable Information on Honda cb1000 service gmaund

1. Confirming eBook Material
2. Identifying Credible References

Encouraging Lifelong Learning

1. Using Digital Books for Learning New Skills
2. Exploring Educational Digital Books

Staying Engaged with Honda cb1000 service gmaund

1. Participating in Online Reading Communities
2. Joining Virtual Literary Circles
3. Tracking Authors and Book Producers of Honda cb1000 service gmaund

Choosing the Right eBook Platform

1. Popular Digital Book Platforms
2. Attributes to Look for in a Honda cb1000 service gmaund
3. Intuitive Design

Exploring Electronic Book Recommendations from Honda cb1000 service gmaund

1. Tailored Recommendations
2. Reader Reviews and Ratings of Honda cb1000 service gmaund
3. Top-selling Lists

Boosting Your Literary Experience

1. Changeable Fonts and Text Sizes of Honda cb1000 service gmaund
2. Marking and Note-Taking in Honda cb1000 service gmaund
3. Engaging Elements in Honda cb1000 service gmaund

Balancing Electronic Books and Printed Books

1. Honda cb1000 service gmaund Benefits of a Digital Archive
2. Developing a Diverse Library of Honda cb1000 service gmaund

Cultivating a Reading Routine

1. Creating Literary Goals for Honda cb1000 service gmaund
2. Making Dedicated Reading Time

## Understanding the Digital Book Industry

1. The Rise of Electronic Books
2. Pros of Electronic Books Over Traditional Books

## Discovering Honda cb1000 service gmaund

1. Investigating Different Categories
2. Weighing Fiction vs. Non-Fiction
3. Setting Your Reading Goals



Figure Honda Cb1000 Service Gmaund - ev.fpune.edu.py

**Honda Cb1000 Service Gmaund**, Page 1. Honda Cb1000 Service Gmaund. 1. Honda Cb1000 Service Gmaund. Honda Cb1000 Service Gmaund. Downloaded from ftp.wtvq.com by guest. JAZMINE KANE. ftp.wtvq.com/locs?textid=W55b336&FilesData=Honda\_Cb1000\_Service\_Gmaund.pdf



Figure Menanti Motor Baru Honda CB1000, Jadi Generasi Terakhir

**Honda Cb1000 Service Gmaund**, Getting the books Honda Cb1000 Service Gmaund now is not type of challenging means. You could not forlorn going subsequent to book accretion or library or borrowing from your associates to right to use them. This is an totally easy means to specifically acquire guide by on-line. This online statement Honda Cb1000 ... ev fpune edu py/viewcontent?dataid=20630&FileName=Honda Cb1000 Service Gmaund.pdf



Figure Menanti Motor Baru Honda CB1000, Jadi Generasi Terakhir

**2021 Honda CB1000R review | The gentlest super naked updated**, Thank you for reading Honda Cb1000 Service Gmaund. As you may know, people have look numerous times for their chosen readings like this Honda Cb1000 Service Gmaund, but end up in malicious downloads. Rather than reading a good book with

a cup of tea in the afternoon, instead they. [motorcyclenews.com/bike-reviews/honda/cb1000r/2021/#:~:text=Fast and fun but not, polished and inspiring road ride](http://motorcyclenews.com/bike-reviews/honda/cb1000r/2021/#:~:text=Fast and fun but not,polished and inspiring road ride)

**CB1000R Offers - Honda**, \*Please check the model and model number carefully before purchasing. \*If the original version of the service manual, parts list, or owner's manual is sold out, the manufacturer may send you a copy of the original. [honda.co.uk/motorcycles/range/street/cb1000r/cb1000r-offers/cb1000r-21ym-offers.html](http://honda.co.uk/motorcycles/range/street/cb1000r/cb1000r-offers/cb1000r-21ym-offers.html)

**Honda Cb1000 Service Gmaund**, [evfpune.edu.py/filedownload?ID=97489&FileName=Honda Cb1000 Service Gmaund pdf](http://evfpune.edu.py/filedownload?ID=97489&FileName=Honda%20Cb1000%20Service%20Gmaund.pdf)

**Buku Service Manual CB1000 SF (Big One) Original**, [webike id/sd/21867254?srsId=AfmBOopqw8Sci4SGyP5phZ4p4hOLOUPY6iC5pV7xE9tN8L9ZWS\\_F4Ad0](http://webike.id/sd/21867254?srsId=AfmBOopqw8Sci4SGyP5phZ4p4hOLOUPY6iC5pV7xE9tN8L9ZWS_F4Ad0)

## Reference of Is Honda cb1000 a good bike?

- |  |   |
|--|---|
| Motorcycle frame (category                           | single spine and single downtube. Examples Honda CB1000 Suzuki  |
| 1. Commons category link is defined as the pagename) | TS50ER The motorcycle engine is held in place within a pair of separate cradles. The Norton Featherbed... |

## Reference of How much is a Honda cb1000?

1. Universal Japanese Motorcyc... interpretations of the UJM; first in the early 1990s with the Honda CB750 RC42 and CB1000, Suzuki GS1100G and VX800, the Kawasaki Zephyr Series, and Yamaha...

## Reference of What is the top speed of the Honda CB 1000cc?

- |  |   |
|--|---|
| 1. Honda Gold Wing                                 | The Honda Gold Wing is a series of touring motorcycles manufactured by Honda. Gold Wings feature shaft drive and a flat engine. Characterized by press... |
| Suzuki GSX-R series (category                      | which began with Honda's CB-750 of 1969. These bikes were   |
| 2. Short description is different from Wikidata)   | available in a variety of sizes from 350cc to 1200cc from all four of the Japanese manufacturers...   |
| 750 Motor Club (category                           | by a 1000cc high performance motorbike engine, the cars reach   |
| 3. Motorsport organisations in the United Kingdom) | 60 mph in just 3 seconds and go on to 150 mph, while revving to around 14000rpm. The most...  |

[CONFLICTMANAGEMENTANDNEGOTIATION](#)

[QUALITYMANAGEMENT](#)

[TIMEMANAGEMENTANDPRODUCTIVITY](#)

[CUSTOMERRELATIONSHIPMANAGEMENTCRM](#)

[INNOVATIONANDENTREPRENEURSHIPMANAGE](#)

[RISKMANAGEMENT](#)

[CHANGEMANAGEMENT](#)

[SUPPLYCHAINMANAGEMENT](#)

[MARKETINGMANAGEMENT](#)

[FINANCIALMANAGEMENTMANAGERS](#)

[HUMANRESOURCEMANAGEMENT](#)

[PROJECTMANAGEMENT](#)

[LEADERSHIPANDMANAGEMENT](#)

[OPERATIONSMANAGEMENT](#)

[STRATEGICMANAGEMENT](#)

**Berapa harga motor honda cbr 600rr?** Model dasar Honda CBR600RR adalah CBR600RR Standard, yang tersedia di Rp 507,98 Juta di Indonesia.

**Berapa Harga Honda CB 500?**

**Berapa harga seri Honda CB?**

**Berapa harga CBR 1000 RR R?**

**Berapa silinder CBR 600 cc?** Mesin baru DOHC 599cc 4-silinder tercatat mempunyai tenaga maksimal 89 kW (121 PS)/14.000 rpm.

**Berapa harga motor cb 650?** Harga Honda CB650R 2024 di Indonesia dimulai dari Rp 291,01 Juta. Terdapat dalam 1 varian di Indonesia. CB650R digerakkan oleh mesin 648.72 cc dengan transmisi 6-Kecepatan. Honda CB650R memiliki tinggi jok 810 mm dengan bobot 203 kg. Rem depan menggunakan Cakram Ganda, sedangkan di belakang Disc.

**Honda CB 400 tahun berapa?** Motor legendaris Honda CB400 pertama kali dirilis di Jepang sekitar tahun 1990-an. Setelah hampir 30 tahun mengaspal, Honda CB400 akan discontinued atau disuntik mati.

**Berapa harga motor Honda CB 150 R?**

**Berapa harga cb dilan?**

**CB itu honda apa yamaha?** Dikutip dari Rideapart.com, Kamis (22/7/2021), Honda banyak menggunakan kode CB dan CBR pada motornya.

**Honda CB itu apa?** Sebagai informasi, CB adalah singkatan dari City Bike. Ini artinya, motor Honda CB memang lebih direkomendasikan untuk digunakan di jalanan kota.

**Berapa harga CBR 250 4 silinder?** Honda CBR250RR 2024 tersedia dalam rentang harga Rp 63,46 - 75,66 Juta di Indonesia. Terdapat dalam 2 varian di Indonesia. CBR250RR digerakkan oleh mesin 249.7 cc dengan transmisi 6-Kecepatan.

**Berapa harga CBR 600 R?**

**Berapa silinder CBR 400 RR?** Soal performa, Honda CBR400R MY 2024 menggondong mesin 2-silinder inline DOHC 4-klep pendingin air berkubikasi 399 cc. Memiliki rasio kompresi 11:1, jantung pacu berteknologi PGM-FI tersebut menghasilkan tenaga 45,4 dk di 9.000 rpm dan torsi puncak 38 Nm di 7.500 rpm.

**Berapa harga motor cbr 500 cc?** Harga Honda CBR500R Standard di Indonesia adalah Rp 161,2 Juta. Tersedia dalam 2 pilihan warna yaitu Grand Prix Red dan Mat Axis Grey Metallic.

**Berapa harga motor CBR 650r?** Untuk Honda CBR650R juga dengan kenaikan harga yang sama, tipe standar dijual dengan harga 8.599 Euro atau sekitar Rp 146,5 jutaan. Sementara tipe E-Clutch dijual seharga 8.699 Euro atau sekitar Rp 148,2 jutaan. Kedua motor tersebut akan mulai tersedia di bulan April 2024.

**Apakah CBR Ada 4 silinder?** Honda sendiri baru meluncurkan CBR 4 silinder, dan bukan motor modifikasi ataupun konsep namun sudah versi produksi. Motor itu adalah Honda CBR600RR model year 2024, yang dipajang di sirkuit Suzuka (4/8).

**Berapa harga honda cb250r terbaru?** Berapa harga Honda CBR250RR? Harga Honda CBR250RR di Indonesia mulai dari Rp 64,84 Juta hingga Rp 76,67 Juta.

**Berapa harga motor Royal Enfield 650?**

## **Berapa HP CB650R?**

**CB Old terakhir tahun berapa?** Honda CB150R old ini diproduksi tahun 2012-2015.

**Mesin CB 100 tahun berapa?** CB100 K0 diperkenalkan pada tahun 1970 hingga 1971 dengan desain yang kokoh dan lampu bulat klasik. Mengusung mesin 99 cc Over Head Camshaft (OHC), 4 langkah, 1 silinder yang mampu menghasilkan tenaga 11,5 hp, motor ini dilengkapi dengan transmisi manual 5 percepatan dan sistem pengapian platina.

**Berapa cc Honda CB 100?** Dijejali Mesin 200cc, Honda CB100 Bertampang Klasik Performanya Gahar - GridOto.com.

**Berapa pajak honda cbr 150 cc?** Biaya Pajak Honda CBR 150R 2024 di Indonesia Biaya pajak untuk Honda CBR 150R 2024 di Indonesia adalah sekitar Rp 1.000.000,- per tahun.

## **Berapa harga cb150x?**

## **Berapa harga motor honda verza?**

**Berapa harga CBR 250 4 silinder?** Honda CBR250RR 2024 tersedia dalam rentang harga Rp 63,46 - 75,66 Juta di Indonesia. Terdapat dalam 2 varian di Indonesia. CBR250RR digerakkan oleh mesin 249.7 cc dengan transmisi 6-Kecepatan.

## **Berapa Harga Honda CBR sekarang?**

**Berapa harga motor CBR 650r?** Harga Honda CB650R 2024 di Indonesia dimulai dari Rp 291,01 Juta. Terdapat dalam 1 varian di Indonesia. CB650R digerakkan oleh mesin 648.72 cc dengan transmisi 6-Kecepatan. Honda CB650R memiliki tinggi jok 810 mm dengan bobot 203 kg. Rem depan menggunakan Cakram Ganda, sedangkan di belakang Disc.

## **Berapa harga cbr 400rr?**

## **Berapa harga CBR250RR 2 silinder?**

**Berapa pajak CBR250RR?** Dilansir dari berbagai sumber, Kamis (28/12/2023) Inilah biaya dan perhitungan pajak dari Honda CBR 250RR. Untuk motor Honda CBR250RR, pajak tahun pertama dikenakan PKB sebesar Rp1.004.000, SWDKLLJ sebesar Rp 143.000, biaya administrasi STNK sepeda motor sekitar Rp100.000, dan biaya administrasi TNKB Rp 100 ribu.

**Berapa harga CBR250RR bekas?** Berdasarkan informasi dari berbagai sumber, berikut kisaran harga CBR 250RR bekas di Indonesia: CBR 250 RR 2016: Rp35.000.000 - Rp43.000.000. CBR 250 RR 2017: Rp40.000.000 - Rp49.000.000. CBR 250 RR 2018: Rp41.500.000 - Rp50.000.000.

**Berapa pajak honda cbr 150 cc?** Biaya Pajak Honda CBR 150R 2024 di Indonesia Biaya pajak untuk Honda CBR 150R 2024 di Indonesia adalah sekitar Rp 1.000.000,- per tahun.

**Apakah CBR 150 1 silinder?** CBR150R ditenagai oleh Pendingin Cairan PGM-FI 149.16 cc 1 Cylinder engine yang menghasilkan Tenaga 16.8 hp pada 9000 rpm dan Torsi 14.4 Nm pada 7000 rpm.

**Berapa harga motor cbr 500 cc?** Harga Honda CBR500R Standard di Indonesia adalah Rp 161,2 Juta. Tersedia dalam 2 pilihan warna yaitu Grand Prix Red dan Mat Axis Grey Metallic.

**Berapa harga motor cbr 1000r?** Honda CBR1000RR-R Fireblade tersedia dalam dua varian. Tipe standar dengan warna hitam (Matte Pearl Morion Black), dan versi SP dengan kelir khas Honda Tricolor. Keduanya dipasarkan dengan harga Rp Rp 990 juta dan Rp 1,1 miliar on the road wilayah Jakarta.



**Berapa harga motor CBR 1000 RR?** Berapa harga Honda CBR1000RR-R? Harga Honda CBR1000RR-R di Indonesia mulai dari Rp 1,077 Milyar hingga Rp 1,077 Milyar.

**Berapa cc motor CBR600RR?**

**Apakah CBR Ada 4 silinder?** Honda sendiri baru meluncurkan CBR 4 silinder, dan bukan motor modifikasi ataupun konsep namun sudah versi produksi. Motor itu adalah Honda CBR600RR model year 2024, yang dipajang di sirkuit Suzuka (4/8).

**Apakah ada CBR 250 4 silinder?** CBR250RR 4 Silinder sempat mengaspal di jalanan pada era 1990 dengan nama lengkap Honda CBR250RR MC22 di Jepang. Dengan menggunakan mesin 4 silinder 249 cc, karburator Keihin VP20 berpendingin cairan, mampu menghasilkan tenaga 44 dk dengan torsi 24,5 nm dipadukan dengan transmisi manual 6 percepatan.

**Berapa harga CBR 150 RR?**



Figure Honda CB600F - Wikipedia

**Harga OTR Honda CBR600RR - Simulasi Kredit & Cicilan - Oto**, Jual Beli Honda CBF 600 Hornet murah, dan cari motor CBF 600 Hornet di OLX. Temukan ribuan iklan motor CBF 600 Hornet terbaru di OLX pusat bursa motor di Indonesia. [oto.com/motor-baru/honda/cbr600rr/harga#:~:text=Model dasar Honda CBR600RR adalah,507%2C98 Juta di Indonesia](https://oto.com/motor-baru/honda/cbr600rr/harga#:~:text=Model%20dasar%20Honda%20CBR600RR%20adalah,507%2C98%20Juta%20di%20Indonesia)



Figure 2013 Honda CB 600 Hornet

**AHM Luncurkan CBR600RR dan Lengkapi Jajaran CBR Tricolor Series**, Harga For Honda Cb 600 F Hornet 1998-2002 Motorcycle Gauges Case Shell. Rp1.655.000. Harga For Honda Hornet Cb600F Cb600 Cb599 Goldwing G11800 Hornet 600. Rp545.000. Harga UB Motorcycle Clutch Cable For Honda CB600F 599 Hornet 600 19982006. Rp460.000. Harga UB Motorcycle Accessories For Honda HORNET CBR 600 RR ... [astra-honda.com/hondabigbike/news/read/ahm-luncurkan-cbr600rr-dan-lengkapi-jajaran-cbr-tricolor-series#:~:text=Mesin baru DOHC 599cc 4,121 PS\)%2F14 000 rpm](https://astra-honda.com/hondabigbike/news/read/ahm-luncurkan-cbr600rr-dan-lengkapi-jajaran-cbr-tricolor-series#:~:text=Mesin%20baru%20DOHC%20599cc%204,121%20PS%2F14%20000%20rpm)



Is Honda cb1000 a good bike?,How much is a Honda cb1000?,What is the top speed of the Honda CB 1000cc?

Figure Honda CB 600 F Hornet Factsheet - Overview, Details, Specs - Sound, no Voice

**Honda CB650R 2024 Harga OTR, Promo Juli, Spesifikasi & Review - Oto**, The Honda CB600F (known as the Hornet in Europe and Brazil and 599 in the U.S.) is a street motorcycle manufactured by Honda. ... It is powered by a 599 cc (36.6 cu in) liquid-cooled inline-four engine, originally a detuned version of that in the Honda CBR600 sport bike, which currently produces around 102 bhp (76 kW). [oto.com/motor-baru/honda/cb650r#:~:text=Harga Honda CB650R 2024 di,Ganda%2C sedangkan di belakang Disc](https://oto.com/motor-baru/honda/cb650r#:~:text=Harga Honda CB650R 2024 di,Ganda%2C sedangkan di belakang Disc)



Figure Spare parts and accessories for HONDA CB 600 F HORNET ...

**Meluncur Motor Honda CB400 Edisi Perpisahan, Harga Bikin Melongo**, ... tindakan untuk mengurangi dampak lingkungan. Pilih ban. Mencari ban. **TEMUKAN BAN MICHELIN TERBAIK**. Mobil. Cari Berdasarkan Kendaraan. Cari Berdasarkan Dimensi. Temukan Dealer · Bantuan. Cari untuk. Ban HONDA CB 600 F Hornet N. Selesaikan pencarian. Produsen Mobil HONDA. Versi CB 600 F Hornet N. Tahun produksi. Cc. [motorplus-online.com/read/253307388/meluncur-motor-honda-cb400-edisi-perpisahan-harga-bikin-melongo#:~:text=Motor legendaris Honda CB400 pertama,akan discontinued atau disuntik mati](https://motorplus-online.com/read/253307388/meluncur-motor-honda-cb400-edisi-perpisahan-harga-bikin-melongo#:~:text=Motor legendaris Honda CB400 pertama,akan discontinued atau disuntik mati)



Figure Honda CB 600 F Hornet Spezial-Umbau | Louis ?

**Jual Motor Bekas Honda CBF 600 Hornet Harga Murah di ...**, Ingin cek berapa harga Honda Hornet 600 terbaru hari ini? Di Tokopedia tersedia daftar harga Honda Hornet 600 terbaru Juli 2024 yang bisa anda cek secara online setiap harinya. Anda juga bisa mendapatkan informasi Honda Hornet 600 yang sesuai dan cocok untuk berbagai macam aneka merk & tipe kendaraan. [olx.co.id/honda-motor-bekas\\_c200/q-cb-honda?filter=m\\_tipe\\_eq\\_motor-bekas-honda-cbf600hornet%2Cmake\\_eq\\_motor-bekas-honda](https://olx.co.id/honda-motor-bekas_c200/q-cb-honda?filter=m_tipe_eq_motor-bekas-honda-cbf600hornet%2Cmake_eq_motor-bekas-honda)



Figure 2008 Honda CB 600 Hornet

**Jual Honda Hornet 600 Terlengkap - Harga Murah Juli ...**, Plenty of power and excellent reliability from the Honda CB600Fs inline four. It's the same as used in mid-90s CBR600F with carbs not fuel injection. The Honda CB600F Hornet does need revving hard if you want to use all ... [tokopedia.com/find/honda-hornet-600?page=3&srsItd=AfmBOopZ-IShyCKFDeI1DgfwLwbhyWCtBfi4xmnPniSyQT2FqsZV\\_xY3](https://tokopedia.com/find/honda-hornet-600?page=3&srsItd=AfmBOopZ-IShyCKFDeI1DgfwLwbhyWCtBfi4xmnPniSyQT2FqsZV_xY3)



Figure Lot 4 - 2003 Honda CB 600 Hornet

**Honda CB600F**, Beli Produk Honda Cb 600 F Hornet Berkualitas Dengan Harga Murah dari Berbagai Pelapak di Indonesia. Tersedia ? Gratis Ongkir ? Pengiriman Sampai di Hari yang Sama. en wikipedia org/wiki/Honda\_CB600F



Figure Moge Naked Bike Honda CB 600 F Hornet 4 Silinder Seken Bagus ...

**Ban HONDA CB 600 F Hornet N**, 65 honda cb 600f hornet used on the parking motorcycles, the web's fastest search for used motorcycleS. ? Find the motorcycle of your dreams. michelin co id/moto/manufacturers/honda/cb-600-f-hornet-n



Figure Honda CB 600 Hornet 07-13 2007 - 2013

**Jual Honda Hornet 600 Terlengkap - Tokopedia**, Class: naked ; Production: 1998-2012 ; Also called: Hornet 600, CB600F ; Successor: Honda CB650F ... tokopedia com/find/honda-hornet-600?srsLtd=AfmBOoqQvhp3Ox5nEbOanXqLrBarAd76fjQltVZynu4lw7y4hgaa8hZT



Figure ? Honda CB600F Hornet ABS 2011 - Precio, ficha técnica ...

**HONDA CB600F HORNET (1998 - 2006) Review**, motorcyclenews com/bike-reviews/honda/cb600f-hornet/1998/



Figure

**Honda CB 600 F Hornet Factsheet - Overview, Details, Specs ...**, [youtube.com/watch?v=exL6N5KxnPE](https://www.youtube.com/watch?v=exL6N5KxnPE)



Figure

**Jual Produk Honda Cb 600 F Hornet Termurah dan ...**, [m.bukalapak.com/products/s/honda-cb-600-f-hornet](https://www.bukalapak.com/products/s/honda-cb-600-f-hornet)



Figure

**honda cb 600f hornet used – Search for your ...**, [theparking-motorcycle.com/used-motorcycles/honda-cb-600f-hornet.html](https://theparking-motorcycle.com/used-motorcycles/honda-cb-600f-hornet.html)

**Honda CB 600 F Hornet: review, history, specs ...**, [bikeswiki.com/Honda\\_CB600\\_Hornet](https://bikeswiki.com/Honda_CB600_Hornet)

**Honda CB600F Hornet - Enduro.team**, [en.enduro.team/Honda\\_CB600\\_Hornet](https://en.enduro.team/Honda_CB600_Hornet)

**Honda CBR250RR 2024 Harga OTR, Promo Juli, Spesifikasi & Review - Oto**, [oto.com/motor-baru/honda/cbr-250rr#:~:text=Honda CBR250RR 2024 tersedia dalam,cc dengan transmisi 6%2DKecepatan](https://oto.com/motor-baru/honda/cbr-250rr#:~:text=Honda%20CBR250RR%202024%20tersedia%20dalam,cc%20dengan%20transmisi%206%20kecepatan)

**Honda CB650R 2024 Harga OTR, Promo Juli, Spesifikasi & Review - Oto**, [oto.com/motor-baru/honda/cb650r#:~:text=Harga Honda CB650R 2024 di,Indonesia%2C sedangkan di belakang Disc](https://oto.com/motor-baru/honda/cb650r#:~:text=Harga%20Honda%20CB650R%202024%20di,Indonesia%20sedangkan%20di%20belakang%20Disc)

**What are the parts of a motorcycle engine?** At the beating heart of every motorcycle is its engine. It is responsible for providing power to the rear wheel and, in the case of internal combustion engines, is fuelled by gasoline. They consist of pistons, a cylinder block, cylinder head, crankshaft gearbox, and much more.

**How do I identify my Honda motorcycle engine?** Finding the Engine Model To find the model number, look for a model number sticker on the engine. All Honda engines model numbers start with the letter "G," such as "G100", "GX610", or "GXV160." This is the base engine model. The engine model and serial number should be adequate for most of your needs.

**Which engine is used in hero bikes?** The models currently use Honda engines. For Hero's indigenously developed products, the company's current partner Magneti Marelli SpA will provide electronic fuel injection systems, which will increase the fuel efficiency of its motorcycles and scooters.

**Where is engine number on hero Honda glamour bike?** A bike's Engine Number will be stamped on the engine. Try looking at your bike's engine from an angle to find the Engine Number. A bike's Engine Number can also be found in the Owner's Manual and Registration Certificate.

**What is the structure of engine parts?** The engine block, cylinders, pistons, crankshaft, camshaft, cylinder head, valves, timing belt/chain, spark plugs, fuel injectors, exhaust system, lubrication system, cooling system and electronics, all combine to play crucial roles in the engine's operation.

**What is the structure of a motorcycle engine?** It describes 15 key parts including the cylinder head, cylinders, pistons, connecting rod, crankshaft, camshaft, rocker arm, transmission, spark plug, engine valves, and cooling system. Each part plays an important role in the engine's operation and ability to convert fuel into motion.

**How to find Honda engine code?** The engine serial number is stamped into the side of the engine. All Honda engine serial numbers have a 4 or 5 letter prefix followed by a 7 digit number.

**How do I know if my Honda engine is VTEC?**

**How do I identify my Honda ECU?** - All Honda ECU's have an ECU part number which is located on the side of the ECU which allows for easy identification. The middle three characters are the most useful to identify what type of ECU it is. Different generation ECUs may use the same characters. e.g. a P75 OBD I ECU is different from a P75 OBD II ECU.

**Is Hero still using Honda engines?** This is due to the joint venture between the two companies coming to a close in 2010. Hero Honda then became HeroMoto Corp in 2012 thereby changing Hero Honda branded bikes to just Hero. The engines used in Hero bikes are still the engines from Honda. Albeit with a few tweaks by Erik Buell Racing.

**Who made HeroEngine?** HeroEngine is a 3D game engine and server technology platform originally developed by Simutronics Corporation specifically for building MMO-style games.

**Does Hero make their own engine?** NEW DELHI: Fixing its technology deficit after separating from Japanese partner Honda, BM Munjal-owned Hero MotoCorp, India's largest two-wheeler maker by volumes, is building in-house capabilities to make its own engines by teaming up with the world's largest privately-owned engine developer, AVL of Austria.

**How do I know what engine is in my motorcycle?** As for the engine number, you can generally find it on the right side of the engine block or cylinder, clutch lining block, and starter on the right side of the motorbike.

**Where is the VIN number on a Honda engine?** It is also on the certification label attached to the driver's doorjamb, and is stamped on the engine compartment bulkhead. The VIN is also provided in bar code on the certification label. The engine number is stamped into the engine block. It is on the front.

**Where is engine serial number?** The engine serial number is on a metal plate attached to the block, typically found on the left-hand side of the engine. The position of the engine plate varies across different engine series.

**What is engine layout diagram?** It explains that the engine layout diagram shows the optimal power and speed combination for a ship's engine based on its expected operating profile. The optimizing point O on the diagram indicates the engine's matched turbocharger rating.

**What is included in an engine assembly?** The different parts that make up your car's engine consist of: the engine block (cylinder block), the combustion chamber, the cylinder head, pistons, the crankshaft, the camshaft, the timing chain, the valve train, valves, rocker arms, pushrods/lifters, fuel injectors, and spark plugs.

**What are 3 engine parts?**

**What is the main structure of an engine?** The engine block is the main structural component of an engine. It supports and helps maintain alignment of internal and external components. The engine block consists of a cylinder block and a crankcase. An engine block can be produced as a one-piece or

two-piece unit.

**How are motorcycle engines mounted?** In most cases, the engine mounts directly to the motorcycle's frame. This keeps the motorcycle's center of gravity low while keeping the engine far enough away from the wheels and front fork. In non-electric bikes, the fuel tank is mounted over the engine, typically in a central location underneath the seat.

**Do motorcycle engines have pistons?** The pistons for car and motorcycle engines are very hardworking parts that are continuously subjected to reciprocating motion. Casting, which involves pouring molten aluminum into a mold and letting it harden to shape as it cools, used to be the standard method.

**How do I identify my engine?** How to check the type of engine. You can easily find out what kind of engine is in your car by checking the VIN, which can be seen in the owner's manual or under the hood. The VIN can also be found on the front of the driver's side dashboard in most cases.

**How do I check engine code?**

**Where is my Honda code?** Retrieving Your Honda Radio Code Check inside your glovebox where the radio code will be on a sticker that's placed inside or the sticker will be your vehicle owner's manual for the code. Your Honda radio code will also have a specific serial number along with similar credentials for your Honda Navigation system.

**How do I identify my Honda engine?** How to find the engine type code for a Honda car. You can find the engine type codes just below the head gasket engraved on the top of the engine block or stamped into the side of the engine. The engine type code is normally anything up to a four-digit code. The seven-digit serial numbers will follow.

**Which is better VTEC or non VTEC?** It makes a substantial difference in the power available at higher RPMs. VTEC stands for Variable Valve Timing with Electronic Lift Control. Non-VTEC cars don't have this. A Honda with VTEC is the more fancy engine and the one with more power than the standard one with no VTEC.

**What is the difference between a Honda I-VTEC & A VTEC engine?** VTEC is a timing system designed by Honda Motor Corporation, which is used on a variety of Honda and Acura models in every major automotive market. VTEC stands for Variable Valve Timing and Lift Electronic Control. The system was upgraded to i-VTEC in the early 2000s, which added intake camshaft timing adjustment.

**What are the 4 basic parts of a motor?** Different Parts of an Electric Motor and Their Function An Armature or rotor. Commutator. Brushes. Axle.

**What is the most important part of a bike engine?** In an engine, a valve is one of the most crucial parts that aid in combustion to circulate the passage of air. It also helps the fuel to pass to other parts of the bike.

**What are 3 engine parts?**

**What are all the parts in a motor?** These diagrams typically include the engine block, combustion chamber, cylinder head, pistons, crankshaft, camshaft, timing chain, valves, rocker arms, pushrods/lifters, injectors, spark plugs, oil pan, distributor, connecting rods, piston ring, flywheels.

**What are the parts of a stator?** A stator is the stationary component found in electric motors and generators. It consists of a laminated core and coils of insulated wire known as the windings. When alternating current is applied to a stator, it creates a rotating magnetic field.



**What is rotor and stator?** The term, "stator" is derived from the word stationary. The stator then is the stationary part of the AC motor. The rotor is the rotating electrical component. It also consists of a group of electro-magnets arranged around a cylinder, with the poles facing toward the stator poles.

**What are the internal parts of a motor?** In the case of a motor, the core is divided into the stator core and the rotor core, and a magnetic circuit is configured through the air gap in between.

**What is the life of a motorcycle engine?** With proper care and driving, a motorcycle's engine may last for more than 80,000 miles before it needs to be replaced. However, some fundamental rules might give you an idea of what to anticipate. This article will discuss the typical lifespan of a 125cc engine and how long it can last.

**How to make a bike engine run smoother?**

**How many pistons are in a bike engine?** Usually, one, two, less commonly three, and in larger machines, usually four. More than four is rare though there are a few six cylinder machines about, and even more rare are rotary machines with no pistons.

**What are the parts of the engine assembly?**

**What are the main components of an engine?**

**What are engine accessories?** Engines come with hundreds of different accessories?making it all the more complex and demanding a task to maintain them quickly and reliably.

**What is basic motor parts?**

**Why is a flywheel needed?** Not only rotates the engine, the function of the flywheel is to store mechanical energy to balance the engine so that it continues to have good performance. Mechanical power is the energy created when the engine is running. The flywheel works to balance the mechanical power by storing it.

**What does a camshaft do?** Camshafts are integral components of internal combustion engines, responsible for controlling the opening and closing of the engine's intake and exhaust valves. As the camshaft rotates, its lobes push against the valves, allowing the intake of air and fuel and the expulsion of exhaust gases.

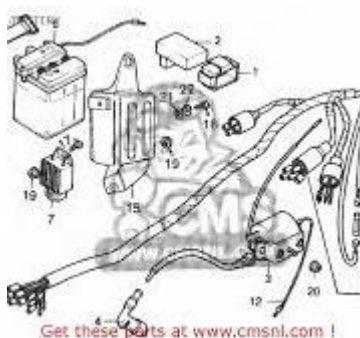


Figure Hero Honda Engine Diagram List

**Hero Honda Splendor Engine Parts Diagram Pdf**, Order your original Honda Scooter, ATV & Motorcycle spares with our part diagrams ?? Search by model or part number ?? Manufacturer warranty - Secure payment. id pinterest com/pin/632403972674877826/

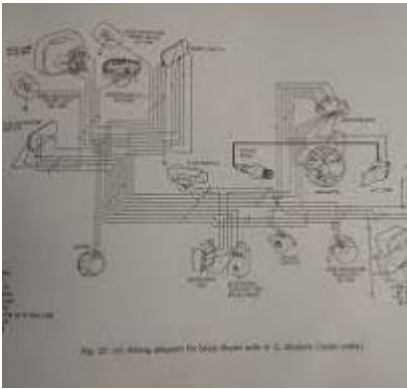


Figure Hero Honda Splendor Engine Diagram Pdf

**Hero Honda Cd 8 Engine Diagram**, The document discusses the main parts of a bike engine and their functions. It describes 15 key parts including the cylinder head, cylinders, pistons, connecting rod, crankshaft, camshaft, rocker arm, transmission, spark plug, engine valves, and cooling system. Each part plays an important role in the engine's ... [pinterest com/pin/738801513858358136/](https://pinterest.com/pin/738801513858358136/)



Figure parts of a motorcycle engine

**# HONDA Motorcycles & ATVS Genuine Spare Parts Catalog**, This parts catalogue is compiled of all service parts and Flat Rate Time (F.R.T.) For. Splendor PRO Motorcycle. I. How to order parts. 1. Information required. Replacement parts orders ... [bike-parts-honda com/](https://bike-parts-honda.com/)

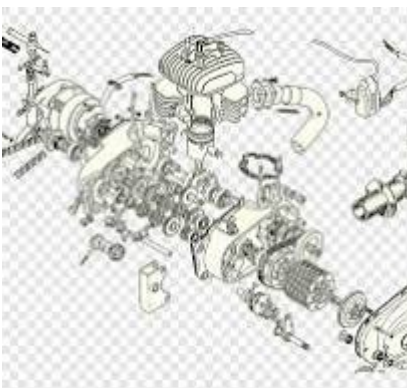


Figure Motorcycle engine Motorcycle engine Exploded-view drawing ...

**Bike Engine Parts | PDF**, Page 1. Material. Description. 0005ZAAF100CS. SECTIONISED ENGINE ASSY. 0005ZKCC830S. SECTIONISED ENGINE SUB ASSY SPLENDOR+. 0005ZKTC920S. SECTIONISED ENGINE SUB ASSY SUPER SPL. 06179KZAW00S. CABLE SET THROT. 06179KZAW00S. 06179KZAW00S ECABLE SET THROT. 06427KTP900HS. TUBE, SET (3.5-10). 06427KTP900S. TUBE, SET (3.5-10). [scribd com/document/613298615/Bike-Engine-Parts](https://scribd.com/document/613298615/Bike-Engine-Parts)



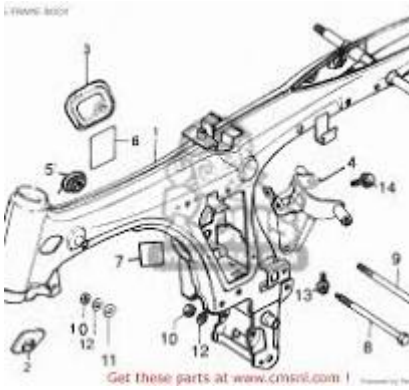


Figure Hero Honda Cd 8 Engine Diagram

**The Most Important Parts of Your Motorcycle to Know About**, Hero Honda Cd 8 Engine Diagram. [dunlopmotorcycl tires.com/about/motorcycle-parts-to-know/#:~:text=At the beating heart of,crankshaft gearbox%2C and much more](http://dunlopmotorcycl tires.com/about/motorcycle-parts-to-know/#:~:text=At the beating heart of,crankshaft gearbox%2C and much more)



Figure parts of a motorcycle engine - YouTube

**Engine Type Identification**, BOM Of Group Number: E-1 Model :: Splendor PRO (Mar, 2012). Ref No. Part Number. Description. Req. 1. 12301-KWH-960. COVER,CYLINDER HEAD. 1. 2. 12331-KWH-960. COVER,R CYLINDER HEAD SIDE. 1. 3. 12341-KWH-960. COVER,L CYLINDER HEAD SIDE. 1. 4. 12361-035-000. CAP, TAPPET ADJUSTING HOLE. [engines.honda.com/support-and-service/engine-type-identification#:~:text=Finding the Engine Model,for most of your needs](http://engines.honda.com/support-and-service/engine-type-identification#:~:text=Finding the Engine Model,for most of your needs)

**Hero's own engines to power new Splendor, Passion - Mint**, [livemint.com/Companies/5zYYiI57sM3dF4JOTT5VRN/Hero-develops-three-new-engines-inhouse.html#:~:text=The models currently use Honda,of its motorcycles and scooters](http://livemint.com/Companies/5zYYiI57sM3dF4JOTT5VRN/Hero-develops-three-new-engines-inhouse.html#:~:text=The models currently use Honda,of its motorcycles and scooters)

**How to Find the VIN, Chassis Number and Engine Number of Your Bike**, [acko.com/how-to-find-the-vin-chassis-number-and-engine-number-of-your-bike/#:~:text=A bike's Engine Number will,Owner's Manual and Registration Certificate](http://acko.com/how-to-find-the-vin-chassis-number-and-engine-number-of-your-bike/#:~:text=A bike's Engine Number will,Owner's Manual and Registration Certificate)

**Hero Honda 100 CC Engine Diagram** | [youtube.com/watch?v=5eJ8NfhDk-M](http://youtube.com/watch?v=5eJ8NfhDk-M)

**splendor pro.pdf**, [safexbikes.com/parts\\_catalog/splendor\\_pro.pdf?srsltid=AfmBOoqIlq95JJi6wLjD8DdhFZWvBm-N\\_Lgdwl1NX4S-Vv33r-DtvjiM](http://safexbikes.com/parts_catalog/splendor_pro.pdf?srsltid=AfmBOoqIlq95JJi6wLjD8DdhFZWvBm-N_Lgdwl1NX4S-Vv33r-DtvjiM)

**COMPLETE "HERO" GENUINE SPARE PARTS LIST**, [catalog.wlimg.com/1/2197403/other-images/table-560090.pdf](http://catalog.wlimg.com/1/2197403/other-images/table-560090.pdf)

**Dsmile36 - Hero Honda Cd 8 Engine Diagram**, [facebook.com/photo.php?fbid=122139165668159675&set=a\\_122125797782159675&type=3](http://facebook.com/photo.php?fbid=122139165668159675&set=a_122125797782159675&type=3)

**PARTS CATALOGUE**, [amanauto.weebly.com/uploads/4/8/9/4/48947129/splendor\\_pro\\_aadh\\_\(hero\).pdf](http://amanauto.weebly.com/uploads/4/8/9/4/48947129/splendor_pro_aadh_(hero).pdf)

**What years did Honda make the CB450?** The Honda CB450 is a standard motorcycle made by Honda from 1965 to 1974 with a 444 cc (27.1 cu in) 180° DOHC straight-twin engine.

**What is the spark plug gap on a CB450?** What is the spark plug gap for the CB450 / CL450 / CB500T? Gap specification: 0.7 - 0.8 mm (0.028 - 0.032 in.)

**Is Honda cb1000 a good bike?,How much is a Honda cb1000?,What is the top speed of the Honda CB 1000cc?**

**What kind of oil does a Honda CB450 take?** Recommended oil viscosity for general riding and all temperatures is: SAE 10W-40. We recommend adding 2oz. of Zinc ZDDP additive per quart of oil with every oil change.

**How much horsepower does a Honda CB450 have?** The Honda CB450 was a standard motorcycle part of the CB series in Honda's range manufactured from 1965 to 1974 and powered by a 444cc DOHC straight-twin engine that developed 45 hp.

**How fast does a CB450 go?** Re: Top speed CB450 Notice I said an honest 100 mph. I had a new SuperHawk, back in The Day, it would not reach 100, despite Honda's claims. I also had a pair of CB450 K2's - both would do about 105 actual, which was real good even in those days.

**How fast is the 1984 Honda CB450?** At launch, it came with an 85 mph speedometer and had Comstar wheels. Only cosmetic changes were made in 1983. The Comstar wheels were replaced with a slightly different cast alloy wheel. The speedometer was upped to 105 mph.

**What is a common spark plug gap?** To put it simply, the gap is the space between the central and side electrodes. This spacing is pivotal, dictating the spark intensity, which is crucial for efficient combustion. Vehicle manuals provide the ideal gap, which usually ranges between 0.028" and 0.060".

**What is the gap on NGK plugs?**

**How much gap does a spark plug have?** Spark plug gap Spark plugs in automobiles generally have a gap between 0.6 and 1.8 mm (0.024 and 0.071 in). The gap may require adjustment from the out-of-the-box gap. A spark plug gap gauge is a disc with a sloping edge, or with round wires of precise diameters, and is used to measure the gap.

**Why does Honda use 10w30?** Offers better fuel efficiency, less harmful emissions, better cleaning performance and oxidation protection. This environment-friendly oil protects the engine from wear and prolongs engine life while saving more fuel. Exceptional performance at high and low temperatures.

**What is the mpg on a 1973 Honda CB450?** Based on data from 2 vehicles, 18 fuel-ups and 1,662 miles of driving, the 1973 Honda CB450K gets a combined Avg MPG of 34.24 with a 1.26 MPG margin of error.

**How much oil does a 1982 Honda cb450sc take?** How much oil does a 1982 Honda CB450 take to fill the well? if this is the hondamatic trans, it will take about 3.5 quarts. if this is just the normal standard transmission type then 3.2 quarts. typically on these you will want to add three quarts, then recheck the oil level from there.

**What was the first year for the Honda CB450?** 1965 was a big year for Honda. The company lured the world's top rider, Mike Hailwood, away from MV Agusta with a deal to contest the 250cc, 350cc and 500cc World Championship classes for the 1966 season, and boldly ventured into the 'big bike' market with its revolutionary CB450.

**What is the top speed of the 1974 Honda CB450?** Weight: 449 Pounds. Top Speed: 102 MPH.

**What is the float height on a Honda CB450?** Set float height to 20mm, a little white grease on the edge of the float bowl will make taking it on and off much easier.

**What is the BHP of the Honda CB450?** Producing 45 bhp, it was Honda's first "big" motorcycle. The CB450 had a distinctive chrome-sided fuel tank, and shared Honda's 'family' styling. Early models were known as the 'Black Bomber' or 'Dragon' but in Canada the K1 model was marketed as the 'Hellcat'.

**What does CB stand for on Honda motorcycles?**—often stand for something in particular, often a phrase that denotes the bike's purpose or inspiration. Suzuki's GSX-R supposedly stands for “Grand Sport eXperimental- Racing”, Honda's CB stands for “City Bike”, and CBR is short for “City Bike Racer” (or “racing”) not for “cross beam racer”.

**How much horsepower does a 1972 Honda CB450 have?** As for the power figures, the 1972 Honda CB450 Super Sport had at its core a 444cc four-stroke parallel-twin air-cooled engine that delivered an output power of 45 hp with a peak at 9,000 rpm and 38 Nm (28 lb-ft) of torque available at 7,000 rpm.

**What is the top speed of the Honda cb450?** Combustion chamber and valve modifications have resulted in an output boost from 43 bhp at 8500 rpm, claimed for original 450s, to 45 bhp at 9000 rpm for the new machines. First generation machines were capable of a solid 102 mph top speed and 15.2-sec.

**How fast is a 1985 Honda cb450?** At 516 lbs, the Nighthawk was no lightweight, but it was capable of a 12-second quarter mile and topped out at around 120 mph.

**What is the top speed of the Honda CB 500 in km h?**

**Is a bigger spark plug gap better?** The larger the gap, the more voltage is needed to jump the gap. Most experienced tuners know that increasing the gap size increases the spark area exposed to the air-fuel mixture, which maximizes burn efficiency. For this reason, most racers add high-energy ignition systems.

**How often should I change spark plugs?** If none of the previous issues are forcing you to replace your spark plugs, you can typically change them every 30,000 to 90,000 miles depending on the make and model of your car. Your owner's manual reveals the schedule of your vehicle.

**Are ngk spark plugs pre-gapped?** While most NGK spark plugs are pre-gapped, there are occasions when the gap requires adjustment.

**What happens if you don't gap your spark plugs?** When you don't have the proper spark plug gap, that can lead to premature wear, ignition system stress, and even cylinder misfires. The space between electrodes must be wide enough to create a sufficiently energized spark.

**How do I know if my spark plug gap is wrong?** The customer may experience loss of power, misfires, spark plug fouling, increased plug wear, or poor gas mileage. Too small of a gap may give too weak of a spark to complete the combustion process within the engine; too wide of a gap can lead to the spark plug not firing correctly, causing misfires at high speeds.

**Can you adjust iridium spark plugs?** If adjusting the gap on fine wire or precious metal plugs such as platinum or iridium, be very careful not to apply any pressure or prying force to the fine wire center electrode or insulator as they can be damaged. The gap should be adjusted by only moving the ground electrode.

**What year was the Honda 450 made?** The CRF450R was introduced in 2002. Unlike the competing Yamaha YZ426, the first generation CRF450R has an aluminum frame. In 2003, Honda added a longer shock and new linkage to raise the rear end and steepen the head angle. In 2003, camshaft, exhaust, and ignition map were revised.

**What years are the Honda CBR 400?**

**What year did the CBR 500 come out?** Fast, frugal and—most importantly—fun, Honda's full-fairing CBR500R was originally launched in 2013, injecting a genuine sporting energy to the manufacturer's twin-cylinder "light middleweight" engine platform.

## **What years did they make the Honda CB350?**

**How many gears does a Honda 450 have?** Specs and Features The Honda CRF450R is powered by a liquid-cooled, four-stroke, single-cylinder engine that churns out about a whopping 55 horsepower. It comes with a close-ratio five-speed transmission and a hydraulic clutch, making it easy to shift gears and maintain control even on the most challenging terrain.

**What does CB stand for on Honda motorcycles?** —often stand for something in particular, often a phrase that denotes the bike's purpose or inspiration. Suzuki's GSX-R supposedly stands for “Grand Sport eXperimental- Racing”, Honda's CB stands for “City Bike”, and CBR is short for “City Bike Racer” (or “racing”) not for “cross beam racer”.

**Is a 2004 CRF450 a good bike?** To me, the suspension plushness was more impressive than the engine, but the power is awesome. The '04 CRF450R is a sleek, light and sublimely effective and fun moto weapon. If my powers of persuasion were as good as the Honda's, I still don't think I could talk editor Ken into relinquishing the CRF to my garage.

**Why did Honda stop CBR?** As the market competition tightened the CBR 250 started lacking. The engine became an old one and there were much more powerful 250cc bikes in the segment. The KTM Duke 250 not being direct competition to this bike took much of the 250cc segment sales because of its sheer power of 31 BHP.

**Which Honda CBR is fastest?** 1 Honda CBR1000RR-R Fireblade SP.

**What is the oldest Honda CBR?** In December 1983, the CBR400F, which adopted the “CBR” product brand name for the first time, was launched, reflecting the racing-inspired styling and advanced technology of the CB, which had become synonymous with Honda's road sports models.

**Does the CBR500R have a slipper clutch?** Unlike that smelly two-stroke, the Honda has a wide spread of perfectly delivered power and its throttle, new assist and slipper clutch and new gearbox are buttery and precise. Wound out fully, you can expect a Honda CBR500R top speed of 112mph.

**What is the range of the cb500?** Combine that with a 17.1 litre tank and that gives you a hypothetical range of just over 300 miles.

**Where is the Honda CL500 made?** They are made in Thailand, where Honda had previously made only smaller displacement motorcycles.

**What is the history of the Honda CB450?** The first of the “big Hondas”, the CB450 was the world's first production dual-overhead cam bike. Paired with unusual torsion valve springs and other refinements, it was a technological tour de force that the European and American manufacturers could not match.

**Which is better CB350 or CB350RS?** According to our average user rating, Honda CB350 has a score of 4.7/5 while Honda CB350RS is rated 4.6/5. Q: Which bike among Honda CB350 and Honda CB350RS is cheaper? Honda CB350 is the cheapest among these bikes.

**When did the Honda CB500 come out?** The Honda CB 500 twin was launched way back in 1994 aiming the machine firmly at the commuter sector. If only they knew just how successful it would become...



Figure Oil Seal Kit | Honda CB450 / CL450 / CB500T

**Honda CB450, CL450 Scrambler & CB500T Engine & ...**, 28 Apr 2018 — Tested compression, and super low, about 65 on both cylinders. Adjusted the valves (tricky and weird). Three were a little tight, exhaust on the left side had the mark on the adjusting screw 180 degrees out. Compression is a bit better, now about 90 on both sides. Seems like a top end rebuild might be ... [common-motor com/honda-450-engine-transmission?srsltid=AfmBOopfE2UjCEYAhX2N6I1IcpFXdYhLqDwamX7\\_nMTfHeF1SfY88-Xs](https://www.common-motor.com/honda-450-engine-transmission/?srsltid=AfmBOopfE2UjCEYAhX2N6I1IcpFXdYhLqDwamX7_nMTfHeF1SfY88-Xs)



Figure Ignition Rebuild Kit | Honda CB450 / CL450 / CB500T

**Honda CB450 / CL450 / 500T Parts & Tech Support**, A reworked transmission boasted five (better spaced) speeds and compression increased to 9:1. In line with its cow-trailing abilities, torque increased to 29 ft/lb at 7,000 rpm while output increased slightly to 45 horsepower at 9,000 rpm. [common-motor com/honda-450?srsltid=AfmBOopDYAo9K8iVu6osRFLZ-Z6duPQpdYPiAab\\_ctd\\_ieuGt2Prek\\_j](https://www.common-motor.com/honda-450/?srsltid=AfmBOopDYAo9K8iVu6osRFLZ-Z6duPQpdYPiAab_ctd_ieuGt2Prek_j)



Figure Ignition Contact Points Kit | Honda CB450 / CL450 / CB500T

**Honda CB450 - Wikipedia**, 10 Jul 2015 — So here's what i need to know: are all transmission parts in the 5spd CB450's, CL450's and CB500T's the same and interchangeable? It appears everything is cross compatible with the 68-74 CB450 / CL450 (5 spds) as part numbers don't seem to change. [en wikipedia org/wiki/Honda\\_CB450#:~:text=The Honda CB450 is a,%C2%B0 DOHC straight%2Dtwin engine](https://en.wikipedia.org/wiki/Honda_CB450#:~:text=The Honda CB450 is a,%C2%B0 DOHC straight%2Dtwin engine)

**Honda CB450 / CL450 Frequently Asked Questions**, [common-motor com/honda-cb450-faq#:~:text=spark%2Dplug%2Dngk-,What is the spark plug gap for the CB450 %2F CL450,\(0 028 %2D 0 032 in \)](https://www.common-motor.com/honda-cb450-faq#:~:text=spark%2Dplug%2Dngk-,What is the spark plug gap for the CB450 %2F CL450,(0 028 %2D 0 032 in ))

**What engine oil should I use for my CB450 / CL450 / CB500T?**, [support common-motor com/hc/en-us/articles/360020770072-What-engine-oil-should-I-use-for-my-CB450-CL450-](https://support.common-motor.com/hc/en-us/articles/360020770072-What-engine-oil-should-I-use-for-my-CB450-CL450-)

[Is Honda cb1000 a good bike?,How much is a Honda cb1000?,What is the top speed of the Honda CB 1000cc?](https://www.common-motor.com/honda-cb1000/)



having higher revs for a pure N/A 4banger 1. ...

**How much does a Honda 110 pit bike weight?**

**How much does a Honda cb1100 weight?**

**How much does a Honda wave 125i weight?** The Wave125i Standard is powered by a 124.9 cc engine, and has a 4-Speed gearbox. The Honda Wave125i Standard has a seating height of 761 mm and kerb weight of 106 kg.

**How much does a Honda Aquatrax weight?**

**Honda Wave 110i Specs - Ultimate Specs**, Key Specs: Single cylinder, four-stroke, 6.7 cu-in 110.1 cm<sup>3</sup>, 9 HP 9.39 PS / 7 kW, 4-speed, Honda Wave 110i General Information. [ultimatespecs.com/motorcycles-specs/honda/honda-wave-110i-2017](http://ultimatespecs.com/motorcycles-specs/honda/honda-wave-110i-2017)

**2013 Honda Wave 110i Technical Specifications**, 2013 HONDA WAVE110i Specifications ; Vehicle Weight (Curb Weight), - ; Length(mm)?Height(mm)?Width(mm), 1080 x - x 1919 ; Seat Height, 760 mm ; Front Tire ... [ultimatespecs.com/motorcycles-specs/honda/honda-wave-110i-2013](http://ultimatespecs.com/motorcycles-specs/honda/honda-wave-110i-2013)

**HONDA WAVE110i Parts and Technical Specifications**, 2017 Honda Wave 110i specifications, pictures, reviews and rating ; Engine size, 109.1 ccm (6.66 cubic inches) ; Type of engine, Single cylinder, four-stroke. [japanwebike.net/HONDA/WAVE110i/12554/m-spec/?srsId=AfmBOoqvUOBqrEN7vrt9nySpAgIRC0JbCEhcijeV2mrsI8stziurFAzd](http://japanwebike.net/HONDA/WAVE110i/12554/m-spec/?srsId=AfmBOoqvUOBqrEN7vrt9nySpAgIRC0JbCEhcijeV2mrsI8stziurFAzd)

**2017 Honda Wave 110i specifications and pictures**, Front brakes diameter: 220 mm (8.7 inches) ; Rear brakes: Expanding brake (drum brake) ; Rear brakes diameter: 110 mm (4.3 inches) ; Wheels: Aluminium cast wheel. [bikez.com/motorcycles/honda\\_wave\\_110i\\_\\_\\_\\_\\_2017.php](http://bikez.com/motorcycles/honda_wave_110i_____2017.php)

**Honda Wave 110i Specifications**, Read Online Honda Wave 110i Technical Specifications Ultimate Specs. Honda Wave 110i Technical Specifications Ultimate Specs. Since January 2004, a violent ... [bikerzbits.com/honda-wave-110i-specifications](http://bikerzbits.com/honda-wave-110i-specifications)

**Honda Wave 110i Technical Specifications Ultimate Specs**, The Wave110i 2019 MSFK is powered by a 109.17 cc engine, and has a 4-Speed gearbox. The Honda Wave110i 2019 MSFK has a seating height of 758 mm and kerb ... [treca.org/furn/margin/honda\\_wave\\_110i\\_technical\\_specifications\\_ultimate\\_specs\\_pdf](http://treca.org/furn/margin/honda_wave_110i_technical_specifications_ultimate_specs_pdf)

**Honda Wave 110i Specifications - BikerzBits**, Honda Wave 110i Scooter Honda 2017 94.0 kg (207.2 pounds) Single cylinder, four-stroke 8.42 HP (6.1 kW) @ 7500 RPM 8.65 Nm (0.9 kgf-m or 6.4 ft.lbs) @ 5500 ... [bikerzbits.com/honda-wave-110i-specifications](http://bikerzbits.com/honda-wave-110i-specifications)

**Honda Wave 110i (2012-current): Honda's quests concerning beauty ...**, The new Wave 110i fuel-injected single-cylinder 109.1cc four-stroke engine is Euro-3 compliant offering superb fuel efficiency with a total tank range of over ... [moto-choice.com/en/Bike-Review/218/honda-wave-110i-2012-current-hondas-quests-concerning-beauty-and.html#:~:text=The+cub+accelerates+up+to,+even+on+minor+uphill+roads](http://moto-choice.com/en/Bike-Review/218/honda-wave-110i-2012-current-hondas-quests-concerning-beauty-and.html#:~:text=The+cub+accelerates+up+to,+even+on+minor+uphill+roads)

**Honda Wave 110 Drum - THM Motorcycles and Scooters, Philippines**, The Wave110i 2019 is powered by a 109.17 cc engine, and has a 4-Speed gearbox. The Honda Wave110i 2019 has a seating height of 758 mm and kerb weight of 95 kg. [thmmotorcycles.com/ph/viewdetails.php?id=551&param=0&action=0&pageNum=6](http://thmmotorcycles.com/ph/viewdetails.php?id=551&param=0&action=0&pageNum=6)

**Wave Alpha - Honda Motorcycle: Impian X**, [boonsiewhonda.com/my/product/honda-wave-alpha-2023/](http://boonsiewhonda.com/my/product/honda-wave-alpha-2023/)

**Honda Wave110i 2019 MSFK - Zigwheels**, [zigwheels.co.th/en/new-motorcycles/honda/wave110i/msfk](http://zigwheels.co.th/en/new-motorcycles/honda/wave110i/msfk)

**2017 Honda Wave 110i Technical Specifications - Ultimate Specs**, [ns20912485171.a2dns.com/motorcycles-specs/honda/honda-wave-110i-2017](http://ns20912485171.a2dns.com/motorcycles-specs/honda/honda-wave-110i-2017)

**2014 Honda Wave 110i specifications and pictures**, [bikez.com/motorcycles/honda\\_wave\\_110i\\_2014.php](http://bikez.com/motorcycles/honda_wave_110i_2014.php)

**Honda Wave110i 2019 Motorcycle Price, Find Reviews, Specs**, [zigwheels.co.th/en/new-motorcycles/honda/wave110i](http://zigwheels.co.th/en/new-motorcycles/honda/wave110i)

**What is Total Quality Management TQM PDF?** Total Quality Management (TQM) is committed to a process-driven approach with continual improvement to long term success that leads to customer satisfaction while performance is the goal achievement of any organization.

**What are the principles of TQM?** The eight principles of TQM are customer focus, employee involvement, integrated system, process-centric approach, systematic flow, continual efforts, fact-based decision-making, and relationship management. An organization must understand them to achieve excellence in manufacturing processes.

**What is TQM with an example?** Total quality management (TQM) is the continual process of detecting and reducing or eliminating errors in manufacturing. It streamlines supply chain management, improves the customer experience, and ensures that employees are up to speed with training.

**What is operations management and total quality management?** What is TQM in operations management? TQM in operations management is about optimizing processes for efficiency, quality, and customer satisfaction. It involves continuous improvement, employee involvement, and data-driven decision-making to deliver better products and services.

**What are the 7 TQM tools?**

**What are the 8 pillars of TQM?** The Eight Core Principles of TQM are Customer Focus, Leadership, Involvement of People, Processes Approach, System Approach to Management, Continual Improvement, Factual Approach to Decision-Making, and Mutual Beneficial Supplier Relationship.

**What are the five pillars of TQM?** Product, process, organization, leadership, and commitment-- those are the five pillars of TQM. Build on them. "Product is the focal point for organization purpose and achievement," explains Creech. "Quality in the product is impossible without quality in the process.

**What are the five concept of TQM?** What are the principles of TQM? Total management is based on five fundamental principles: delivering high-quality work the first time, putting the client first, approaching a project strategically, developing a plan for continuous improvement, and fostering a culture of cooperation and mutual respect.

**What is the TQM theory?** A core definition of total quality management (TQM) describes a management approach to long-term success through customer satisfaction. In a TQM effort, all members of an organization participate in improving processes, products, services, and the culture in which they work.

**What is the total quality management TQM process?** Total Quality Management (TQM) is a management framework based on the belief that an organization can build long-term success by having all its members -- from low-level workers to its highest-ranking executives -- focus on improving quality and, thus, delivering customer satisfaction.

**What is total quality management TQM short notes?** TQM is a management approach for an organization, depending upon the participation of all its members (including its employees) and aiming for long-term success through customer satisfaction. This approach is beneficial to all members of the organization and to the society as well.

**What is the total quality management TQM concept \_\_\_\_\_?** A core definition of total quality management (TQM) describes a management approach to long-term success through customer satisfaction. In a TQM effort, all members of an organization participate in improving processes, products, services, and the culture in which they work.

**What is total quality management TQM Six Sigma?** TQM involves costs in regard to process modification, training, and, at times, restructuring the organization. However, Six Sigma helps in reducing operational costs by focusing on cycle time reduction, cost savings, and defect reduction.



Management, 3rd edition by Besterfield, Dale H.; Besterfield-Michna, Carol; Besterfield, ...[http://uop.edu/pk/ocontents/Total Quality Management by Dale H Besterfield, Carol Besterfield-Michna, Glen H Besterfield, Mary Besterfield-Sacre, Hemant Urdhwareshe, Rashmi Urdhwareshe \(z-lib.org\) pdf](http://uop.edu/pk/ocontents/Total%20Quality%20Management%20by%20Dale%20H%20Besterfield,%20Carol%20Besterfield-Michna,%20Glen%20H%20Besterfield,%20Mary%20Besterfield-Sacre,%20Hemant%20Urdhwareshe,%20Rashmi%20Urdhwareshe)

**Total Quality Management Revised Edition - Google Books**, Total Quality Management Revised Edition: For Anna University, 3/e. By Dale H. Besterfield, Carol Besterfield-Michna, Glen H. Besterfield, ... [books.google.com/books?id=6kH2FX2B00MC&printsec=frontcover](https://books.google.com/books?id=6kH2FX2B00MC&printsec=frontcover)

**Total Quality Management**, Original Edition entitled Total Quality Management, 3rd edition by Besterfield, Dale H.; ... Besterfield, Glen H.; Besterfield-Sacre, Mary, published by Pearson. [pdfcoffee.com/download/total-quality-management-revised-edition-pdf-free.html](https://www.pdfcoffee.com/download/total-quality-management-revised-edition-pdf-free.html)

**(PDF) TOTAL QUALITY MANAGEMENT - ResearchGate**, Informasi bibliografi. Judul, Total Quality Management, (Revised Edition). Penerbit, Pearson Education India, 2011. ISBN, 8131732274, 9788131732274. Tebal, 558 ... [researchgate.net/publication/312054032\\_TOTAL\\_QUALITY\\_MANAGEMENT#:~:text=Total Quality Management \(TQM\) is,goal achievement of any organization](https://www.researchgate.net/publication/312054032_TOTAL_QUALITY_MANAGEMENT#:~:text=Total%20Quality%20Management%20is,%20goal%20achievement%20of%20any%20organization)

**Total Quality Management (TQM) - Principles, Elements, Examples**, by R Ramlawati · 2020 — Dalam konsep Total Quality Management yang terpisah, quality control dan quality assurance menurut Dale et al (1999) lebih difokuskan pada pendekatan produk ... [wallstreetmojo.com/total-quality-management/#:~:text=The eight principles of TQM are customer focus%2C employee involvement,achieve excellence in manufacturing processes](https://www.wallstreetmojo.com/total-quality-management/#:~:text=The%20eight%20principles%20of%20TQM%20are%20customer%20focus%2C%20employee%20involvement,%20achieve%20excellence%20in%20manufacturing%20processes)

**What Is Total Quality Management (TQM), and Why Is It Important?**, This Paper aims to analyses and evaluate the TQM in Academic Libraries with a view of examining the exposure of library professionals. [investopedia.com/terms/t/total-quality-management-tqm.asp#:~:text=Total quality management \(TQM\) is,up to speed with training](https://www.investopedia.com/terms/t/total-quality-management-tqm.asp#:~:text=Total%20quality%20management%20(TQM)%20is,%20up%20to%20speed%20with%20training)

**Total Quality Management (TQM): Definition, Principles & Examples**, 12 May 2016 — This document provides an overview of total quality management (TQM). It discusses key dimensions of quality for manufacturing and service ... [teamhood.com/project-management-resources/total-quality-management/#:~:text=What is TQM in operations,deliver better products and services](https://www.teamhood.com/project-management-resources/total-quality-management/#:~:text=What%20is%20TQM%20in%20operations,%20deliver%20better%20products%20and%20services)

**Total Quality Management, (Revised Edition)**, Total Quality Management, (Revised Edition). Front Cover. Pearson Education India, 2011 - Total quality management - 558 pages ... Dale H. Besterfield No ... [books.google.com/books/about/Total\\_Quality\\_Management\\_Revised\\_Edition.html?hl=id&id=n67M3XJB91IC](https://books.google.com/books/about/Total_Quality_Management_Revised_Edition.html?hl=id&id=n67M3XJB91IC)

**3 buku.pdf**, India is renowned in producing students of high calibre and it is necessary that our aspiring students are able to pursue the right education. As we are all ...[http://repository.umi.ac.id/559/1/3 buku pdf](http://repository.umi.ac.id/559/1/3_buku_pdf)

**Total Quality Management in Academic Libraries: A Study**, [researchgate.net/publication/237006071\\_Total\\_Quality\\_Management\\_in\\_Academic\\_Libraries\\_A\\_Study](https://www.researchgate.net/publication/237006071_Total_Quality_Management_in_Academic_Libraries_A_Study)

**Total Quality Management (TQM) | PPT**, [slideshare.net/slideshow/total-quality-management-tqm-61957137/61957137](https://www.slideshare.net/slideshow/total-quality-management-tqm-61957137/61957137)

**Total Quality Management, (Revised Edition)**, [books.google.com/books/about/Total\\_Quality\\_Management\\_Revised\\_Edition.html?id=n67M3XJB91IC](https://books.google.com/books/about/Total_Quality_Management_Revised_Edition.html?id=n67M3XJB91IC)

**PDF**, [aicte-india.org/sites/default/files/Vol I\\_UG.pdf](https://aicte-india.org/sites/default/files/Vol_I_UG.pdf)